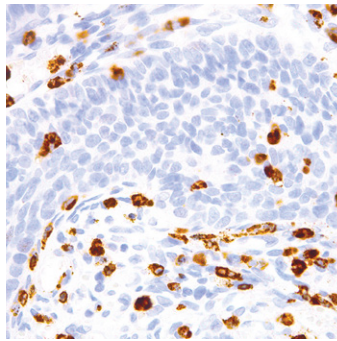


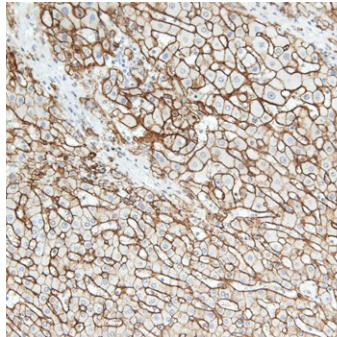


GeneAb™

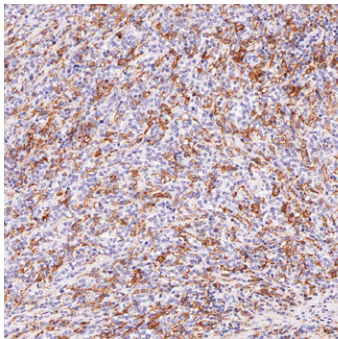
# Hematopathology Panel



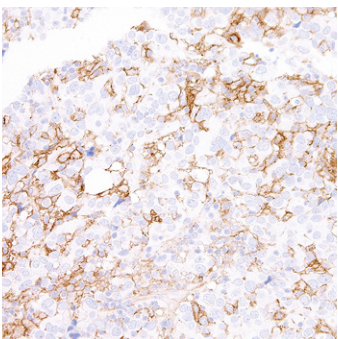
**Fig1.** GeneAb™ CD15/Leu-M1 (IHC527) on Cervical Cancer



**Fig2.** GeneAb™ CD138 (IHC138) on Liver Cancer



**Fig3.** GeneAb™ Hairy Cell Leukemia (IHC687) on Lymphoma



**Fig4.** GeneAb™ PD-L1 (IHC411) on Lung



## GeneAb IHC Antibodies

*Diagnostics you can trust*

GeneAb antibodies are specifically designed, developed, screened, and validated for immunohistochemistry (IHC). Our antibodies are tested by ELISA, WB, IHC and ICC to ensure uncompromising performance in specificity and sensitivity.

### Exceeding industry gold standards:

- Over 300 tissue types (both normal and disease state) tested with each antibody.
- Immunocytochemistry (ICC) carried out with knock out / knock in cell lines established in house.
- Strict guidelines for quality assurance in place that meet ISO 13485 and MDSAP requirements.
- Blind evaluation of each slide is performed by our team of pathologists



GenomeMe®

1-604-244-9962

info@GenomeMe.ca

www.GenomeMe.ca



pg. 1

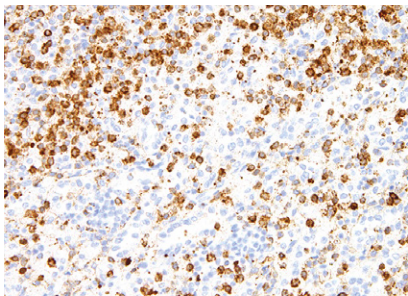


GeneAb™

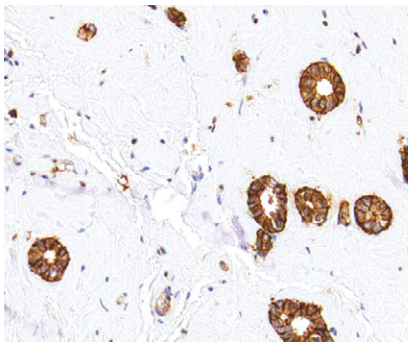
# Hematopathology Panel

Antibody Name	Clone #	Starting At
<b>Annexin A1</b>	IHC512	\$90
<b>CD2</b>	IHC531	\$105
<b>CD5</b>	IHC538	\$165
<b>CD15/Leu-M1</b>	IHC527	\$50
<b>CD138</b>	IHC138	\$65
<b>CD44</b>	IHC044	\$45
<b>CD45 (LCA)</b>	IHC045	\$45
<b>CD45R</b>	IHC536	\$65
<b>CD57</b>	IHC539	\$50
<b>Clusterin/ Apolipoprotein J</b>	IHC546	\$90
<b>CTLA-4</b>	IHC004	\$145
<b>c-Myc</b>	IHC548	\$115
<b>Glycophorin A</b>	IHC587	\$80

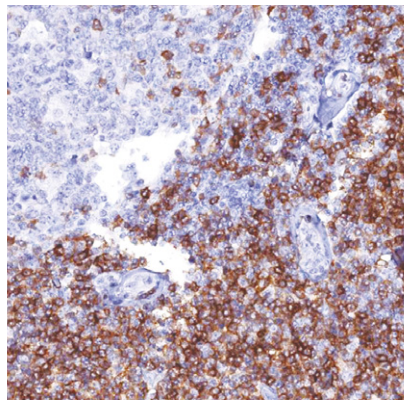
Antibody Name	Clone #	Starting At
<b>Hairy Cell Leukemia</b>	IHC687	\$150
<b>hENT1</b>	IHC595	\$170
<b>Kappa</b>	IHC610	\$20
<b>LMO2</b>	IHC615	\$110
<b>MDM2</b>	IHC620	\$105
<b>p21</b>	IHC021	\$60
<b>PAX-5</b>	IHC005	\$50
<b>PD-1</b>	IHC001	\$60
<b>PD-L1</b>	IHC411	\$50
<b>SOX-11</b>	IHC011	\$125
<b>TIM3</b>	IHC003	\$145
<b>Vimentin</b>	IHC684	\$50



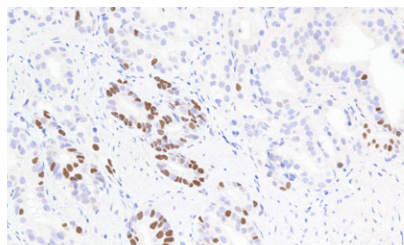
**Fig5.** GeneAb™ Annexin A1 (IHC512) on Spleen



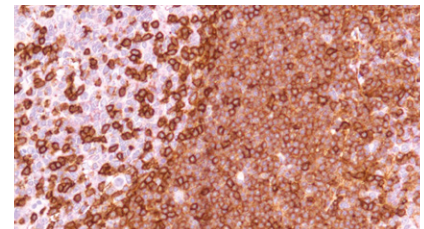
**Fig6.** GeneAb™ CD44 (IHC044) on Breast Cancer



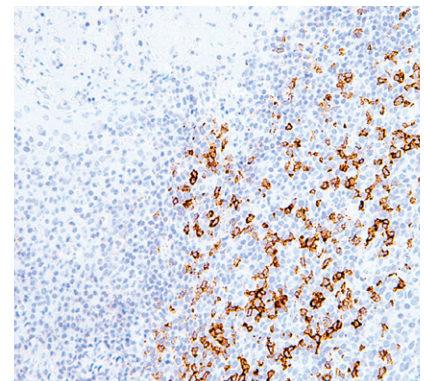
**Fig8.** GeneAb™ CD5 (IHC538) on Tonsil



**Fig7.** GeneAb™ c-Myc (IHC548) on Stomach



**Fig9.** GeneAb™ CD45R (IHC536) on Tonsil



**Fig10.** GeneAb™ PD-1 (IHC001) on Tonsil

